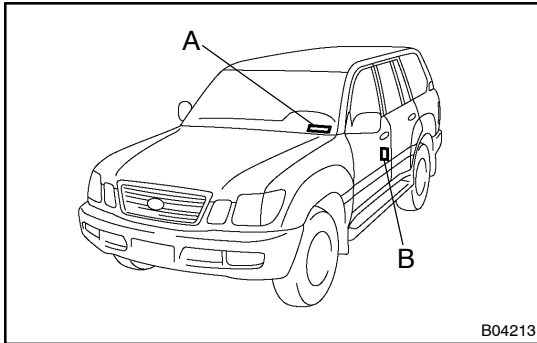


# IDENTIFICATION INFORMATION

## VEHICLE IDENTIFICATION AND ENGINE SERIAL NUMBER

IN083-03



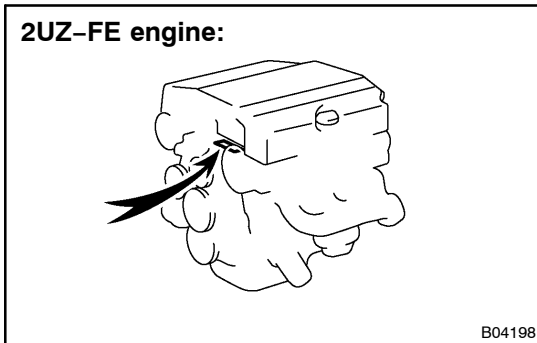
### 1. VEHICLE IDENTIFICATION NUMBER

The vehicle identification number is stamped on the vehicle identification number plate and the certification label, as shown in the illustration.

A: Vehicle Identification Number Plate

B: Certification Label

### 2UZ-FE engine:



### 2. ENGINE SERIAL NUMBER

The engine serial number is stamped on the engine block, as shown in the illustration.